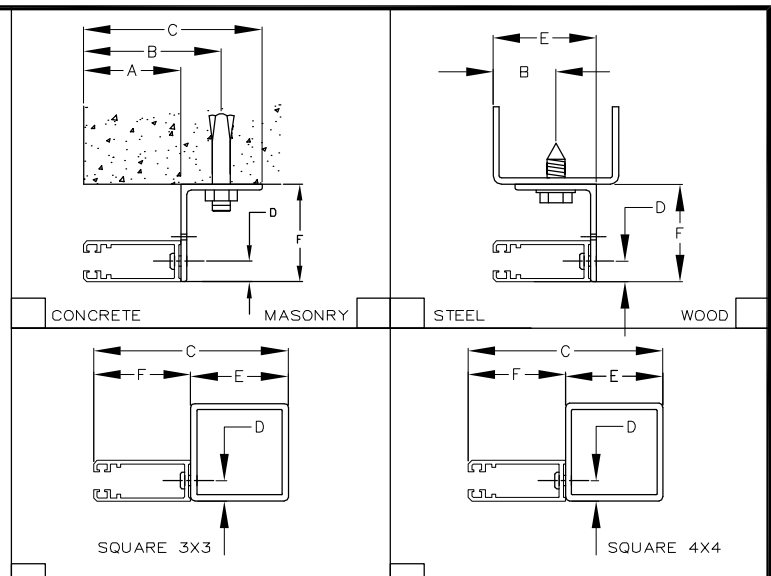


**SECTION A - A**



GUIDE TYPE	A"	B"	C"	D"	E"	F"
Z	3	4 1/4	5 1/2	5/8		3
E		1 15/16	3 1/2	5/8	3 3/16	3
SQ3			6	5/8	3	3
SQ4			7	7/8	4	3

**MINIMUM SIDE ROOM CLEARANCES REQUIREMENTS:**

	CHAIN HOIST	CRANK HOIST	ELECTRIC OPERATOR
DRIVE C	9"	7"	6"
TENSION	6"	6"	6"

**GENERAL NOTES**

- STANDARD: CURTAIN: TO BE CLEAR ANODIZED HOLLOW TUBES OVER COLD ROLLED STEEL RODS. MILL FINISH LINKS.
- BOTTOM BAR: CLEAR ANODIZED ALUMINUM.
- GUIDES: CLEAR ANODIZED ALUMINUM WITH POLYETHYLENE INSERT.
- NON ALUMINUM SURFACES: TO BE SHOP COATED WITH RUST INHIBITING PRIMER.
- OPERATION: RIGHT HAND SHOWN, LEFT HAND OPPOSITE

02-15-02

500-H

QTY.	OPENING SIZE		OPERATION	RH LH	CLEARANCES		OPTION	PROJECT:	ARCHITECT:	CONTRACTOR:	DISTRIBUTOR:	DATE:	SHEET: OF:	BY:	REF. #.
	WIDTH "W"	HEIGHT "H"			"X"	"Y"									
<b>MODEL 500 GRILLE DOOR - WITH MOTOR H</b>															



NOTE: Porvene Doors is not responsible for improper installation procedures, structural backing, and field inspections of the project itself.

APPROVAL SIGNATURE: \_\_\_\_\_ DATE SIGNED: \_\_\_\_\_