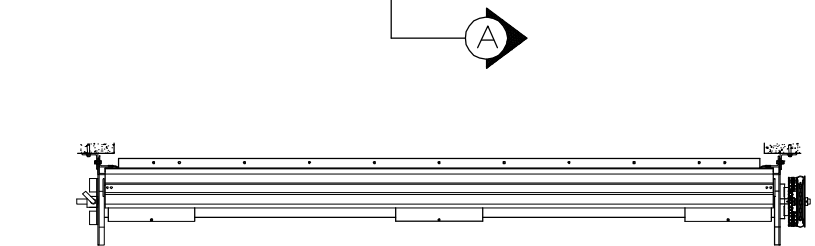
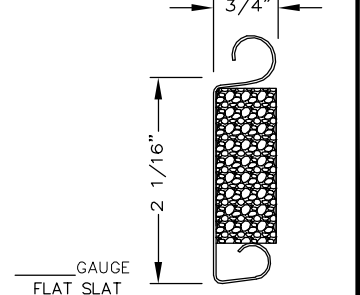


GUIDE TYPE	A"	B"	C"	D"	E"	F"
1	2 5/8	3 3/8	4 5/8	1 9/16	2 13/16	3 5/16
2	2 5/8	3 7/16	5 1/4	1	2 13/16	3 15/16
3	2 5/8	4 3/8	5 5/8	1 1/16	2 13/16	4 3/8
4	2 5/8	4 3/8	5 5/8	1 1/8	2 7/8	4 3/4

GENERAL NOTES

- * SLATS/HOOD: GALVANIZED STEEL WITH BAKED ON EPOXY PRIMER & POLYESTER TOP COAT.
- * OTHER SURFACES: SHOP COAT PRIMER
- * OPERATION: RIGHT HAND SHOWN
LEFT HAND OPPOSITE
- * FOR MALLEABLE WINDLOCKS ADD 3/8" TO A, B, C, D, & E
- * INSULATION IS 3/4" TUF-COTE POLYETHER URETHANE FOAM ADHERED TO BACK OF FLAT SLAT.



02-21-02

400 ECONOTHERM

SECTION A - A

MDL.	QTY.	OPENING SIZE		OPERATION	RH	CLEARANCES		OPTION	PROJECT:	ARCHITECT:	CONTRACTOR:	DISTRIBUTOR:	DATE:	SHEET: OF:	BY:	REF. #.
		WIDTH "W"	HEIGHT "H"			"X"	"V"									
400 SERIES - ECONOTHERM INSULATED DOOR																



MORENO VALLEY, CA 92553
(951) 653-3727

NOTE: Porvene Doors is not responsible for improper installation procedures, structural backing, and field inspections of the project itself.

APPROVAL SIGNATURE:

DATE: