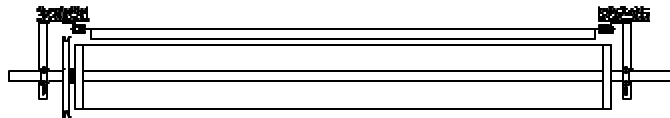
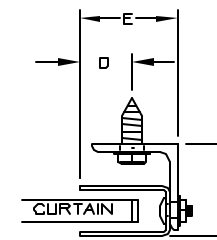


ELEVATION

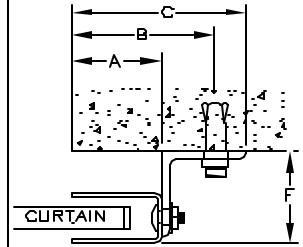
SECTION A - A



PLAN

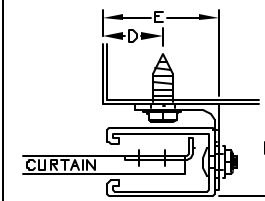


U-GUIDE FOR STEEL/WOOD

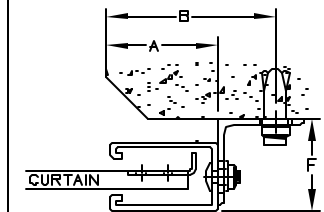


Z-GUIDE FOR CONCRETE/MASONRY

GUIDE TYPE	A"	B"	C"	D"	E"	F"
1						
2 PIECES	2 1/2	3 13/16	4 1/2	1 1/4	2 5/8	2 1/16

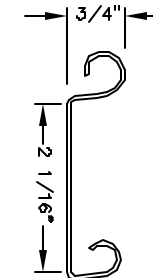


WIND LOCK FOR STEEL OR WOOD

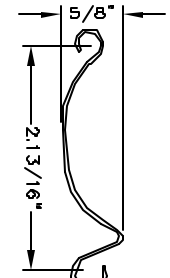


WINDLOCK FOR CONCRETE OR MASONRY

W. L. GUIDE	A"	B"	D"	E"	F"
	2 5/8	4	1 7/16	2 3/4	2 1/8



24 GAUGE FLAT SLAT



24 GAUGE CURVED SLAT

GENERAL NOTES

LEFT HAND SHOWN, RIGHT HAND OPPOSITE

OPERATION	A1	A2
ELECTRIC OPERATION	9"	6"
CAST REDUCTION	9"	6"
ALL REDUCTION ON DOORS 14' WIDE OR WIDER	10"	7"

07-21-03

322-COMSLAT

MRK.	QTY.	OPENING SIZE		OPERATION	CLEARANCES		OPTION	PROJECT:	ARCHITECT:	CONTRACTOR:	DISTRIBUTOR:	DATE:	SHEET:	QF:	BY:	REF. #.
		WIDTH "W"	HEIGHT "H"		"X"	"V"										



MODEL 324-COMMERCIAL SLAT DOOR

NOTE: Porvene Doors is not responsible for improper installation procedures, structural backing, or field inspections of the project itself.

APPROVAL SIGNATURE:

DATE: