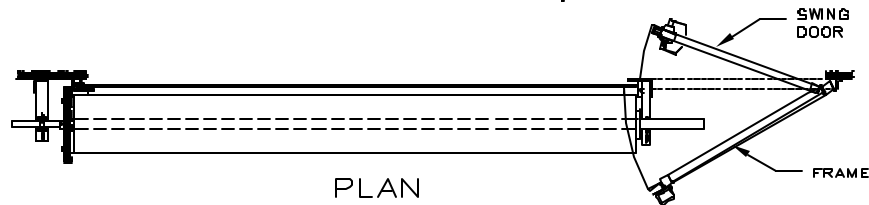


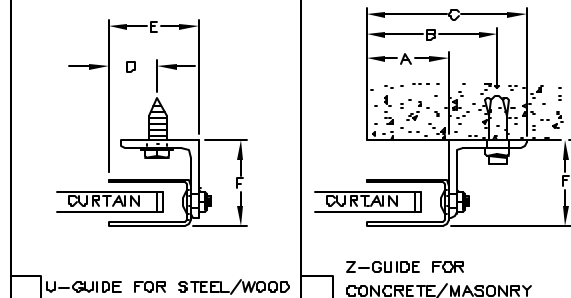
ELEVATION



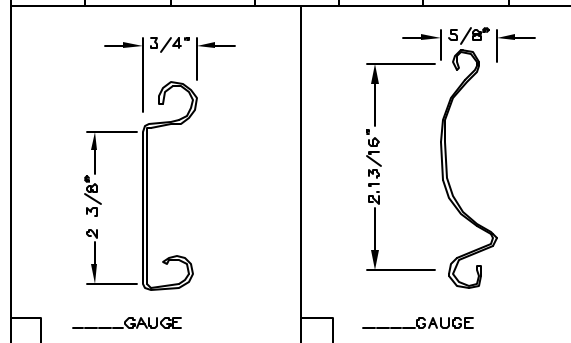
PLAN



SECTION A - A

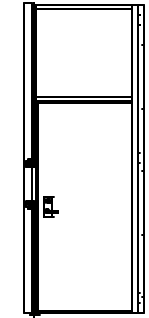


2 PC. GUIDES	A"	B"	C"	D"	E"	F"
		2 1/2	3 13/16	4 1/2	1 1/4	2 5/8

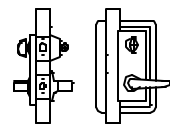


**GENERAL NOTES**

RIGHT HAND WICKET SHOWN, LEFT OPPOSITE OPERATION	A1"	A2"
ELECTRIC OPERATION	9	6
CAST REDUCTION	9	6
ALL REDUCTION ON DOORS 14" WIDE OR WIDER	10	7



HOLLOW METAL DOOR  
18 GA



INTERCONNECTED LOCK  
W/INTERCHANGEABLE  
CORE

02-18-03

300-Wicket-R

MRK.	QTY.	OPENING SIZE		OPERATION	RH LH	CLEARANCES		OPTION	PROJECT:											
		WIDTH "W"	HEIGHT "H"			"X"	"V"		ARCHITECT:	CONTRACTOR:	DISTRIBUTOR:	DATE:	SHEET: OF:	BY:	REF. #:					
										<b>300 SERIES-COMMERCIAL SLAT DOOR/R.H. WICKET</b>										



NOTE: Porvene Doors is not responsible for improper installation procedures, structural backing, and field inspections of the project itself.

APPROVAL SIGNATURE: \_\_\_\_\_ DATE: \_\_\_\_\_