



INSTALLATION INSTRUCTIONS

MODELS: 211, 231, 232, 233, 234

COMMERCIAL INDUSTRIAL INSULATED WINDLOCK INSULATED-WINDLOCK

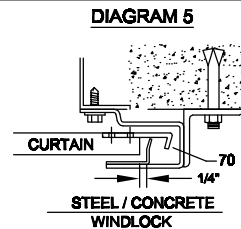
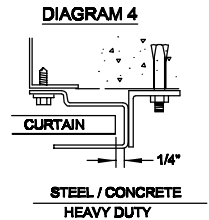
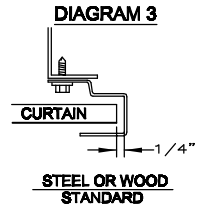
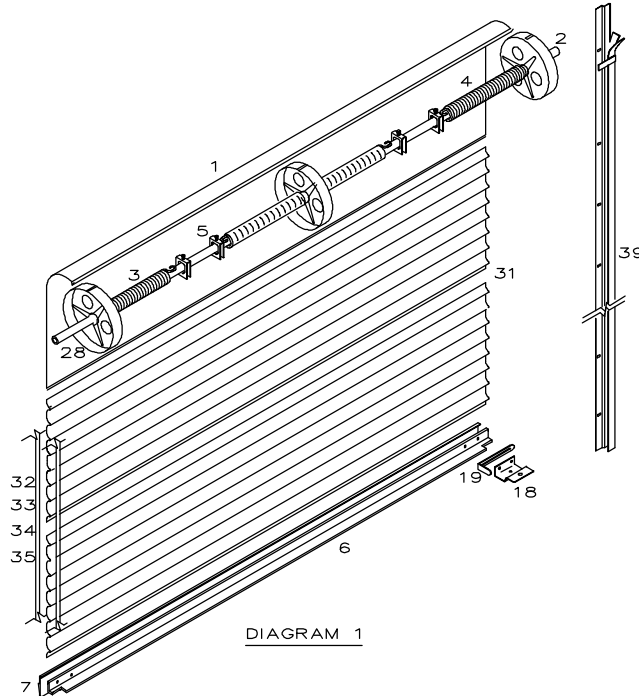
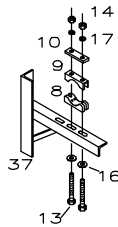
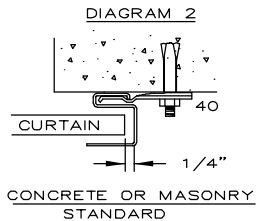
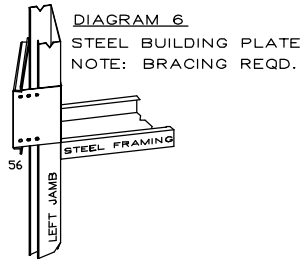
MORENO VALLEY, CA 92553

USE PORVENE DOORS PARTS ONLY - ALL OTHERS SHALL VOID WARRANTY

ALL PORVENE PRODUCTS MUST BE INSTALLED BY A LICENSED QUALIFIED PROFESSIONAL DOOR COMPANY TO QUALIFY FOR OUR WARRANTY. INSTALLATION WITHOUT PROPER TOOLS AND KNOWLEDGE CAN RESULT IN PERSONAL INJURY. THIS PAMPHLET IS DESIGNED TO ASSIST A PROFESSIONAL IN THE INSTALLATION OF PORVENE MODEL 200 SERIES DOORS. SAFETY IS FOREMOST. INSTALLATION SHOULD BE EXECUTED BY LICENSED QUALIFIED DOOR PROFESSIONALS. INSPECT ALL OF THE SHIPPED PARTS AND ACCOUNT FOR EVERYTHING BEFORE COMMENCING ANY WORK. FOR QUESTIONS AND TECHNICAL ASSISTANCE, CONTACT THE PORVENE ENGINEERING DEPARTMENT.

MAIN OFFICE & MANUFACTURING PLANT
 14241 GRANT STREET
 MORENO VALLEY, CA 92553
 TOLL FREE TEL: (877) 906 - 3999
 TOLL FREE FAX: (877) 343 - 6677

DISTRIBUTION CENTER
 4119 SOUTH MARKET COURT
 SACRAMENTO, CA 95834
 TEL: (916) 437- 0401
 FAX: (916) 437- 0403



1	TOP SHEET	VARIABLES	26	HAND CHAIN	420401	51	COLLAR	430104
2	AXLE, 1.1/4" SCH.40 OR 80	VARIABLES	27	SQUARE WASHER	750104	52	BOLT, 5/16" - 18 X 3"	730202
3	SPRING (LEFT HAND)	VARIABLES	28	DOOR DRUM ASSEMBLY	220303	53	LOCK NUT, 5/16" - 18	740202
4	SPRING (RIGHT HAND)	VARIABLES	29	BOLT, FLAT HEAD 5/16" X 1"	730601	54	STAY BRACE 97	430108
5	SPRING/AXLE CLAMP	230003	30			55	SELF DRILLING SCREW 1/4"	730713
6	BOTTOM ANGLE	VARIABLES	31	CORRUGATED DOOR SHEET	VARIABLES	56	STD. STL. BLDG. PLATE (PAIR)	310400
7	BLADE ASTRAGAL	270201	32	NYLOFELT	260005	57	DBL. BRKT. STL. PLATE (PAIR)	310411
8	AXLE SADDLE, CAST IRON	310101	33	PVC SIDESTRIP, BLACK	260002	58	NYLON HUB LINER	220301
9	AXLE SADDLE, STAMPED	310103	34	STEEL SIDESTRIP	260001		PNEUMATIC EDGE, PVC RETAINER	440128
10	KEEPER PLATE	310102	35	PVC BUTTON WITH RIVET	750403			
11	EXTENDED KEEPER PLATE	420101	36	NYLOTRON	270301			
12	U-BOLT, 3/8" - 16	770301	37	SUPPORT BRACKET, L.H.	310300			
13	BOLT, 3/8" - 24 X 3.1/2"	730103	38	SUPPORT BRACKET, R.H.	310200			
14	NUT, 3/8" - 24	740104	39	CURTAIN GUIDE	VARIABLES			
15	NUT, 3/8" - 16	740103	40	GUIDE CLIP (CONCRETE)	321102			
16	FLAT WASHER, 3/8"	750103	41	DIRECT DRIVE ASSEMBLY	420000			
17	LOCK WASHER, 3/8"	750203	42	D. DRIVE POCKET WHEEL	420103			
18	SLIDE BOLT KICK PLATE	280301	43	CHAIN GUIDE, D. DRIVE	420200	60	INSULATION, P.E. BUBBLE	260301
19	SLIDE BOLT	280104	44	BOLT, 3/8" - 16 X 1.1/4"	730102	61	MYLAR TAPE	260401
20	BOLT 1/4" - 20 X 1.1/4"	730301	45	RED. DRIVE ASSEMBLY	430000	62	SIDE DRAFT STOP	630003
21	NUT 1.1/4" - 20 SELF LOCK	740201	46	RING GEAR, R. DRIVE	430102	63	TOP DRAFT STOP	630002
22	NUT, 5/16" - 18	740102	47	SUN SPROCKET	430101			
23	FLAT WASHER, 1/4"	750101	48	IDLER GEAR, (PINION)	430103			
24	ROPES, 5/16"	410102	49	IDLER GEAR CARRIER	430200	70	WINDLOCK CLIP	270504
25	CHAIN KEEPER	420405	50	CHAIN GUIDE, R. DRIVE	430300			

IMPORTANT REMARKS:



DO NOT CUT THE BANDS WHICH HOLD THE DOOR IN A ROLL. YOU WILL BE TOLD AT A LATER TIME EXACTLY WHEN TO CUT THEM. NO GUARANTEE WILL BE GIVEN OR RESPONSIBILITY ACCEPTED BY THE MANUFACTURER IF THE DOOR IS NOT INSTALLED AS INSTRUCTED. FOR PROPER OPERATION, FOLLOW THE INSTRUCTIONS AS GIVEN. PLEASE REVIEW ALL THE STEPS BEFORE BEGINNING.

STEP 1 - PREPARATION (*ALL 200 SERIES DOORS)

- 1.1 CHECK THE WIDTH AND HEIGHT OF THE CLEAR OPENING WITH THE PACKING LIST.
- 1.2 CHECK IF THE DOOR JAMBS ARE PLUMB.
- 1.3 CHECK IF THE FLOOR AND HEADER ARE LEVEL.
- 1.4 CHECK DIMENSIONS FOR APPROPRIATE SIDE ROOM AND HEADROOM REQUIREMENTS. (SEE DIAGRAM 7)
- 1.5 THE WALL ANGLES IN STEP 9 MUST BE INSTALLED PLUMB AND LEVEL TO EACH OTHER EVEN IF JAMBS ARE NOT PLUMB AND FLOOR IS SLOPED.

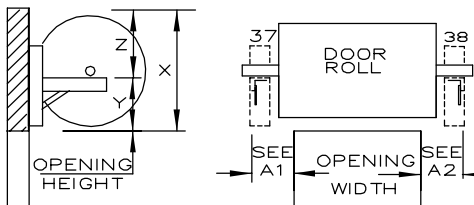
STEP 2 - INSTALL BRACKETS

PROVIDE ADEQUATE BACKING. MINIMUM 4" X 4" WOOD OR 12 GA. STEEL JAMBS. STEEL MOUNTING PLATES MAY BE REQUIRED. (SEE DIAGRAM 6)

- 2.1 MARK THE HORIZONTAL LOCATION OF THE SUPPORT BRACKETS (A1) - (A2). (SEE DIAGRAM 7)
- 2.2 MARK THE VERTICAL LOCATION OF THE SUPPORT BRACKETS BY USING THE "Y" DIMENSION. USE A TRANSIT OR WATER LEVEL. THE DOOR MUST BE LEVEL.

NOTE: VERIFY MINIMUM HEADROOM REQUIREMENTS (Z). IF INSUFFICIENT, THE BRACKETS AND GUIDES MUST BE LOWERED IN EQUAL AMOUNTS UNTIL (Z) DIMENSION IS OBTAINED. THIS PROCEDURE WILL REDUCE THE OPENING HEIGHT.

LEFT HAND DRIVE SHOWN THROUGHOUT DIAGRAM 7



OPERATION	A1	A2
ROPE PULL =	5"	5"
DIRECT DRIVE =	8"	5"
REDUCTION DRIVE = UNDER 20' WIDTH	9"	6"
REDUCTION DRIVE = 20' WIDE OR WIDER	11"	8"

ELECTRIC MOTOR = SAME AS REDUCTION DRIVE, PLUS ADDITIONAL SIDEROOM FOR MOUNTING MOTOR ON WALL.

CLEARANCE REQUIREMENTS

HEIGHT	X	Y	Z
UP TO 7'-6"	19"	9.1/2"	9.1/2"
UP TO 10'-0"	20"	10"	10"
OVER 10'-1"	22"	11"	11"

IF PORVENE ROPE HOIST IS USED, "Z" CLEARANCE NEEDS TO BE 12".

- 2.3 FASTEN THE BRACKETS WITH THE PROPER WALL FASTENERS REQUIRED TO OBTAIN A SOLID MOUNTING. REFER TO THE TABLE BELOW.

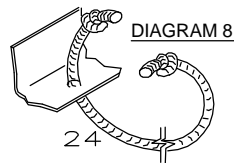
BRACKETS	FASTENER *
STEEL	USE 1/2" - 13 X 1.1/4" HEX HEAD BOLTS.
CONCRETE	USE 3/8" X 3" HEX NUT SLEEVE ANCHORS. (EXPANSION BOLTS)
WOOD	USE 3/8" X 3" LAG SCREWS
BLOCK OR BRICK	THRU-BOLTS OR ALL-THREAD 1/2" OR - 3/8" FURNISHED UPON REQUEST

* NUMBER AND SIZE OF FASTENERS MUST MATCH HOLES PROVIDED IN BRACKETS.

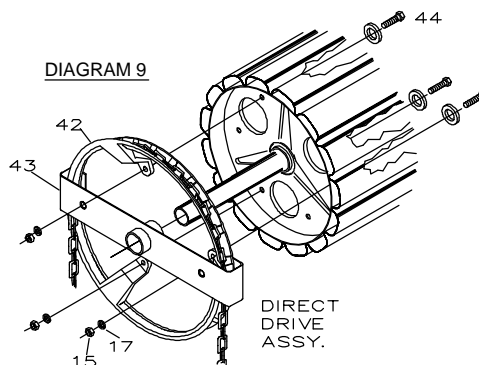
STEP 3 - DRIVE INSTALLATION

- 3.1 **PUSH-PULL OPERATION**
INSTALL ROPE AS FOLLOWS:
DRILL A 1/2" HOLE IN THE MIDDLE OF THE BOTTOM ANGLE.

THREAD ROPE THROUGH AND KNOT BOTH ENDS.



- 3.2 **DIRECT DRIVE OPERATION**
SLIDE DIRECT DRIVE ASSY. ONTO DOOR AXLE
ALIGN HOLES
INSTALL 3/8" BOLT (44) THRU REAR OF DRUM.
INSTALL 3/8" NUT (15) AND LOCK WASHER (17).
TIGHTEN SECURELY...REPEAT.
INSTALL HAND CHAIN ON POCKET WHEEL

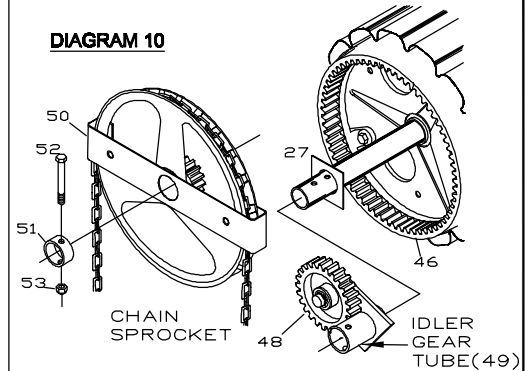


- 3.3 **REDUCTION DRIVE OPERATION**
INSTALL AS FOLLOWS:

INSTALL SQUARE WASHER (27)
REMOVE BOLT (52)
INSTALL REDUCTION DRIVE ASSEMBLY
SECURE WITH 5/16" X 3" BOLT (52) AND 5/16" SELF-LOCKING NUT (53)

(SEE DIAGRAM 10)

DIAGRAM 10



KEEP IDLER GEAR AT A 10 OR 2 O'CLOCK POSITION (WITH THE BOTTOM ANGLE BEING AT 6 O'CLOCK.)
RECOMMENDED POSITION

STEP 4 - POSITION DOOR ASSY.

- 4.1 PLACE THE APPROPRIATE SADDLE ON BRACKET. LIFT THE DOOR ASSY. UP ONTO THE SADDLES WHILE CENTERING THE DOOR IN THE OPENING. IF SIDEWAYS MOVEMENT IS NECESSARY, MAKE SURE THAT THE DOOR CURTAIN AND THE AXLE MOVE TOGETHER.
- 4.2 ALL MODELS:
POSITION THE DOOR AS CLOSE AS POSSIBLE TO THE HEADER. DO NOT ALLOW THE CURTAIN OR DRIVE TO SCRAPE THE HEADER. CENTER CURTAIN IN THE OPENING.

STEP 5 - AXLE HARDWARE

- 5.1 **ROPE PULL:**
AFTER PLACING STAMPED SADDLE (9) UNDER AXLE, PLACE THE U-BOLT (12) OVER AXLE AND THROUGH AXLE CLAMP. INSTALL 3/8" WASHER, LOCK WASHER, AND NUT.
DO NOT TIGHTEN, DO NOT CUT BANDS.
(SEE DIAGRAM 12-A) PROCEED TO STEP 6

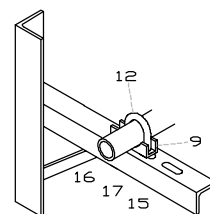


DIAGRAM 12-A

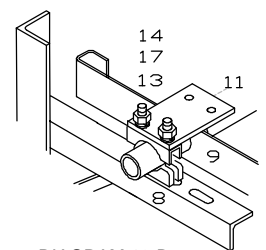


DIAGRAM 12-B

- 5.2 **DIRECT DRIVE:**
AFTER PLACING CAST SADDLE (8) UNDER AXLE, PLACE THE STAMPED SADDLE (9) AND THE EXTENDED KEEPER PLATE (11) OVER AXLE AS SHOWN. INSTALL 3/8" X 3.1/2" BOLT (13), LOCK WASHER (17), AND NUT (14).
DO NOT TIGHTEN, DO NOT CUT BANDS.

(SEE DIAGRAM 12-B) PROCEED TO NON-DRIVE SIDE INSTRUCTIONS.

5.3 REDUCTION DRIVE: (DRIVE SIDE)

DOORS UNDER 20' WIDE

AFTER PLACING CAST SADDLE (8) UNDER AXLE, PLACE THE 2 STAMPED SADDLES (9) AND EXTENDED KEEPER PLATE (11) ON TOP OF AXLE AS SHOWN. INSTALL 3/8" BOLTS (13), U-BOLT (12), LOCK WASHER (17), AND NUT (14) AS SHOWN.

DO NOT TIGHTEN, DO NOT CUT BANDS.

INSTALL STAY BRACE (54) TO CHAIN GUIDE (50) BY USING BOLT (29), WASHER (23), AND NUT (22). USE TEK SCREW (55) & WASHER (23) TO SECURE STAY BRACE (54) TO BRACKET (37). (SEE DIAGRAM 12C)

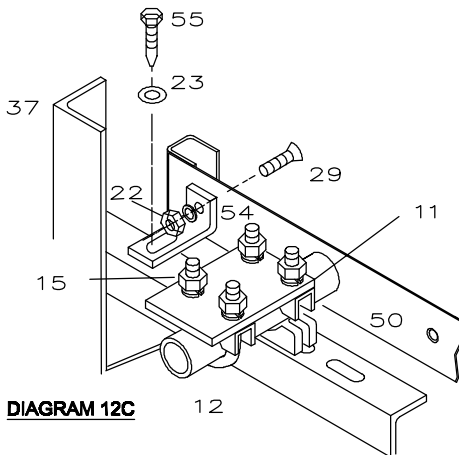


DIAGRAM 12C

DOORS 20' WIDE OR WIDER

AFTER PLACING CAST SADDLES (8) UNDER AXLE, PLACE THE 2 STAMPED SADDLES (9) AND KEEPER PLATES (10) ON TOP OF AXLE AS SHOWN BELOW. INSTALL 3/8" BOLTS (13), LOCK WASHERS (17), AND NUTS (14) AS SHOWN.

DO NOT TIGHTEN, DO NOT CUT BANDS.

INSTALL STAY BRACE (54) TO CHAIN GUIDE (50) BY USING BOLT (29), WASHER (23), AND NUT (22). USE TEK SCREW (55) AND WASHER (23) TO SECURE STAY BRACE (54) TO BRACKET (37).

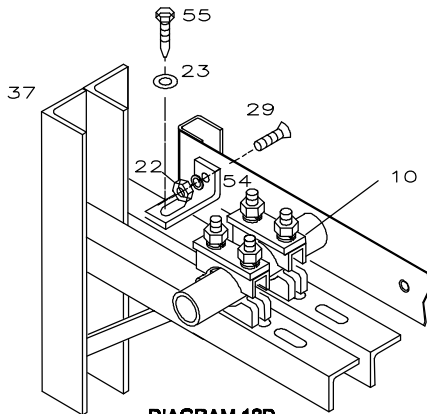


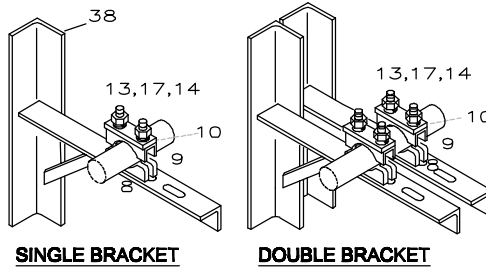
DIAGRAM 12D

5.4 NON-DRIVE SIDE: FOR DIRECT OR REDUCTION DRIVE.

PERFORM THE FOLLOWING STEPS TWICE FOR DOUBLE BRACKETS. AFTER PLACING AXLE SADDLE (8) UNDER AXLE, PLACE THE STAMPED SADDLE (9) AND KEEPER PLATE (10) ON TOP. INSTALL 3/8" BOLTS (13), LOCK WASHER (17), AND NUT (14).

DO NOT TIGHTEN, DO NOT CUT BANDS.

REPEAT STEPS FOR DOUBLE BRACKET CONFIGURATION (SEE THE FOLLOWING DIAGRAMS.)

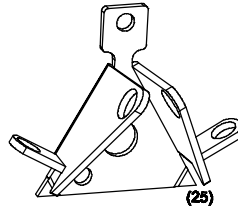


SINGLE BRACKET

DOUBLE BRACKET

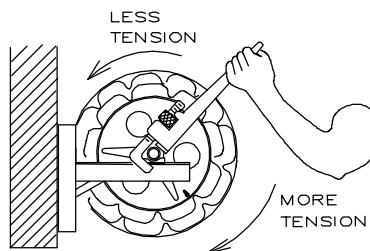
STEP 6 - PRE-TENSION SPRINGS

- 6.1 INSTALL CHAIN KEEPER (25) APPROXIMATELY 4'-0" ABOVE FLOOR FOR CHAIN OPERATED DOORS.



- 6.2 ROPE, DIRECT DRIVE AND E.O. DOORS ONLY
WITH ONE PERSON ON EACH SIDE, EACH PERSON SHOULD FIRMLY PLACE A LARGE PIPE WRENCH ON THE AXLE AS SHOWN IN DIA. 13. PULL DOWN TO APPLY TENSION AND ROTATE AXLE APPROX. 2 TURNS. DO NOT ALLOW THE CURTAIN ASSEMBLY TO SPIN.

TIGHTEN THE AXLE CLAMPS.



- 6.3 REDUCTION DRIVE OPERATION ONLY
SCORE A HORIZONTAL LINE ON THE AXLE, THEN GRIP THE HAND CHAIN SECURELY AND PULL CHAIN UNTIL AXLE COMPLETES APPROX. 2 TURNS IN THE DIRECTION SHOWN IN DIA. 14. DO NOT ALLOW THE DOOR ASSEMBLY TO SPIN. SECURE THE LEADS OF THE HAND CHAIN ON THE CHAIN KEEPER (25).

TIGHTEN THE AXLE CLAMPS.

- CAUTION** FAILURE TO SECURE CHAIN KEEPER OR FAILURE TO SECURE BOTH LEADS OF THE HAND CHAIN TO THE CHAIN KEEPER MAY RESULT IN PROPERTY DAMAGE AND/OR INJURY.

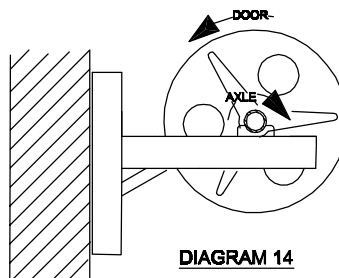


DIAGRAM 14

STEP 7 - CUT THE BANDS

WARNING THE DOOR IS NOW UNDER TENSION. USE EXTREME CARE WHEN HANDLING ANY PART OF THE DOOR.

- 7.1 CUT THE BANDS AND BRING THE CURTAIN DOWN APPROX. 3' ABOVE THE FLOOR. SECURE THE CHAIN TO PREVENT UPWARD TRAVEL (ON CHAIN OPERATED DOORS) OR WEDGE A WOOD PROP. BETWEEN BOTTOM ANGLE AND DOOR ROLL (ON OTHER DOORS).

STEP 8 - INSTALL DOOR STOPS AND SLIDE LOCK KITS

- 8.1 INSTALL THE DOOR STOP (18) AND THE SLIDE BOLT LOCK (19) TO THE BOTTOM ANGLE AS SHOWN. INSTALL NYLOTRON (36).

NOTE: NUT (22) AND WASHER (23) MUST BE USED EVEN IF SLIDE BOLT (19) IS NOT USED.

SECOND SET OF HOLES FOR HEAVY DUTY DOORS ONLY. EXCEPT WINDLOCKED.

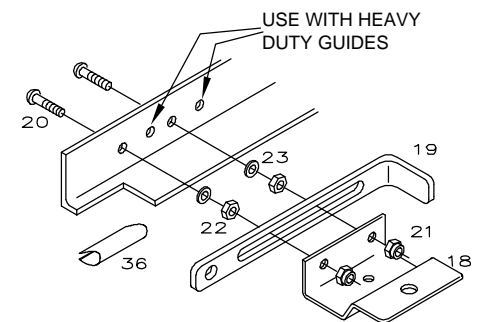


DIAGRAM 15

- ▲** WHEN USING ELECTRIC OPERATED DOOR, STOPS (18) MUST STILL BE INSTALLED.

STEP 9 - INSTALL DOOR GUIDES

- 9.1 THE STOPS ON THE GUIDES MUST MATCH THE CLEAR OPENING HEIGHT. THE BOTTOM OF THE STOPS NEED TO BE AT THE SAME LEVEL AS THE HEADER. IF NOT, YOU MUST CUT THE **BOTTOM** OF THE GUIDES TO MATCH YOUR CLEAR OPENING HEIGHT.
- 9.2 MODELS 211, 231, 232:
RAISE THE DOOR CURTAIN SO THE BOTTOM ANGLE IS APPROX. 3" BELOW THE HEADER. SLIDE THE GUIDE OVER THE CURTAIN AND POSITION AGAINST THE DOOR OPENING ALLOWING 1/4" CLEARANCE FROM THE EDGE OF CURTAIN TO INSIDE THE GUIDE.

INSTALL TOP FASTENERS, LOWER CURTAIN INTO GUIDES SLOWLY, MAINTAINING THE PROPER CLEARANCE. STOP AT 6" ABOVE FLOOR. INSTALL BOTTOM FASTENER. USE A LEVEL TO CHECK IF THE GUIDES ARE PLUMB. FILL ALL ANCHOR LOCATIONS, ESPECIALLY TO ACHIEVE DESIRED WINDLOAD.

- 9.3 MODEL 233 & 234 WINDLOCK:
USE THE SAME PROCEDURE AS STEP 9.2 ALLOWING 1/4" CLEARANCE BETWEEN THE CURTAIN AND THE WINDLOCK SPUR. LOWER THE CURTAIN INTO THE GUIDES SLOWLY. BE SURE THERE IS SUFFICIENT CLEARANCE FOR THE WINDLOCK CLIPS TO ENTER INTO GUIDES. (SEE DIAGRAM 5)
- 9.4 FOR DOORS WITH NYLOFELT SIDE-STRIPPING, SPRAY SILICON LUBRICANT FROM TOP TO BOTTOM IN GUIDE. FOR DOORS WITH STEEL AND RUBBER SIDE-STRIPPING, LIGHTLY GREASE THE GUIDES.

STEP 10 - ADJUST BALANCE

IF THE DOOR LOWERS EASILY AND RAISES HARD, MORE TENSION IS REQUIRED.
IF THE DOOR LOWERS HARD AND RAISES EASILY, LESS TENSION IS REQUIRED.
(SEE DIAGRAM 13)

- 10.1 **ROPE PULL & DIRECT DRIVE DOORS :**
PULL THE DOOR INTO THE UP POSITION. SECURE THE DOOR BY TYING A ROPE AROUND THE ROLL AT BOTH ENDS OF THE DOOR.

WARNING WHEN THE AXLE CLAMPS ARE LOOSENED, THE SPRINGS WILL BE VERY STRONG. YOU WILL NEED TWO PEOPLE TO ADJUST THE DOOR TENSION SAFELY. (REFER TO STEP 6, SECTION 6.2)

- 10.2 **REDUCTION DRIVE DOORS :**
PULL THE DOOR INTO THE UP POSITION. SECURE THE DOOR BY TYING A ROPE AROUND THE ROLL AT BOTH ENDS OF THE DOOR.

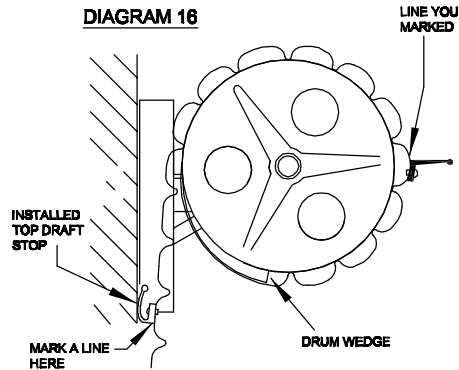
WARNING WHEN THE AXLE CLAMPS ARE LOOSENED, THE CHAIN LEADS WILL BE UNDER TENSION. USE EXTREME CARE WHEN HANDLING THE CHAIN LEADS. SECURE BOTH LEADS OF THE CHAIN TO THE CHAIN RETAINER (25). SCORE A HORIZONTAL LINE ON THE AXLE. LOOSEN AXLE HARDWARE TO ALLOW AXLE TO SPIN FREELY. GRIP BOTH LEADS OF THE CHAIN SECURELY.
NOTE DIRECTION AXLE MUST TURN TO ADD OR REDUCE TENSION.
(SEE DIAGRAM 14)
ROTATE AXLE AS REQUIRED. SECURE BOTH CHAIN LEADS TO THE CHAIN RETAINER. TIGHTEN ALL AXLE HARDWARE. REPEAT THIS OPERATION IF MORE OR LESS TENSION IS REQUIRED.

STEP 11 - TOP DRAFT STOP

(*OPTIONAL)

- 11.1 PULL THE DOOR DOWN AND LOCK SECURELY. GO OUTSIDE AND MARK A LINE ON THE DOOR CURTAIN AS SHOWN. (SEE DIAGRAM 16)

RAISE DOOR 2'-6" FROM FLOOR OR UNTIL THE MARKED LINE IS ACCESSIBLE.
PLACE TOP DRAFT STOP (63) IN POSITION AS SHOWN AND SECURE WITH SUPPLIED FASTENERS. STRETCH RUBBER SLIGHTLY AND SECURE OTHER END. LOCATE AND INSTALL THE REMAINDER OF FASTENERS AT 6" O.C.



SERVICE & MAINTENANCE TIPS

- 1 **DOOR CURTAIN DRAGS IN GUIDES :**
 - A. CHECK DOOR SUPPORT BRACKETS FOR LEVEL.
 - B. ADJUST LOCATION OF GUIDES FOR 1/4" SIDE CLEARANCE TOP AND BOTTOM.
 - C. DOOR DRUM ASSY. MAY BE SET TOO CLOSE OR TOO FAR FROM WALL.
NOTE: SLOTTED BRACKETS FOR ADJUSTMENT.
 - D. CHECK GUIDES FOR FOREIGN MATTER, SUCH AS DIRT, ETC.
 - E. CHECK FOR DAMAGED GUIDES
 - F. ADJUST LEAD-IN BEND AT TOP INSIDE OF GUIDES
- 2 **DOOR OPERATES HARD IN ONE DIRECTION :**
 - A. CHECK ALL THE ABOVE POINTS.
 - B. RECHECK STEP NO. 10.
- 3 **CHAIN JUMPS OFF CHAIN GEAR :**
 - A. MAKE SURE DRIVE PARTS ARE ASSEMBLED CORRECTLY. SEE DIAGRAM 9 FOR DIRECT DRIVE OR DIAGRAM 10 FOR REDUCTION DRIVE.
 - B. CHAIN GUIDE COULD BE BENT OUT OF ALIGNMENT WITH CHAIN WHEEL.
 - C. CHECK FOR DEFECTS IN CAST CHAIN WHEEL OR CHAIN.
 - D. CHECK FOR TWISTS IN THE CHAIN.
 - E. ON ELECTRIC OPERATOR DOORS, CHECK FOR SPROCKET ALIGNMENT AND PROPER CHAIN TENSION.
- 4 **DOOR CONTINUES TO CONE :**
 - A. AN ALTERNATIVE SOLUTION TO CORRECT THE CONING IS TO RAISE THE CURTAIN UP TO THE STOPS AND DETERMINE WHICH SIDE OF THE BOTTOM ANGLE TOUCHES THE STOPS FIRST.
 - B. SECURE HAND CHAIN. REMOVE GUIDES, LOWER CURTAIN DOWN TO FLOOR LEVEL AND FLATTEN THE DRUM WEDGE ON THE SIDE THAT THE BOTTOM ANGLE HITS THE STOPS FIRST (IN STEP A).
 - C. PROCEED TO STEP NO.9 TO INSTALL THE DOOR GUIDES.
 - D. IF PROBLEM CONTINUES, CONSULT FACTORY.

MAIN OFFICE & MANUFACTURING PLANT

14241 GRANT STREET
MORENO VALLEY, CA 92553
(877) 906-3999 FAX #: (877) 343-6677
WWW.PORVENEDOORS.COM

DISTRIBUTION CENTER

4119 SOUTH MARKET COURT
SACRAMENTO, CA 95834
(916) 437-0401 FAX #: (916) 437-0403